

BEREA MUST RAISE 27 CENTS OF EVERY DOLLAR



to provide the Tuition Promise Scholarship for every admitted student. This totals over **\$4 million** dollars to be raised every year for the BERA FUND.

73%

Percentage of operating budget revenue provided from endowment earnings. Other schools use tuition as a key revenue source. Berea relies on donors to make education possible for the students it serves.

9,857 DONORS

Gifts from
**ALUMNI, FRIENDS,
AND ORGANIZATIONS**
enabled Berea to provide
1,643 STUDENTS
with a **NO-TUITION PROMISE**
in 2015-2016.

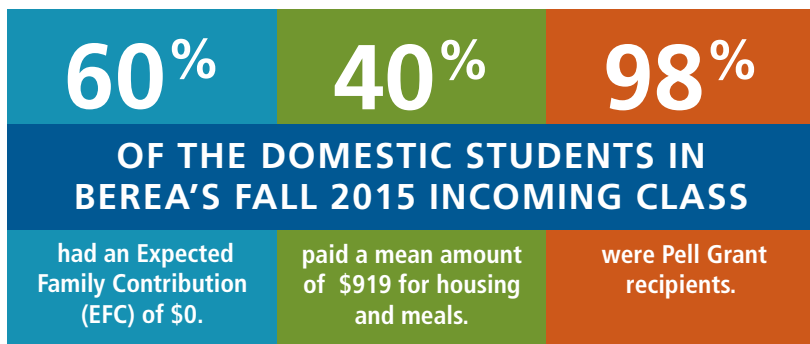
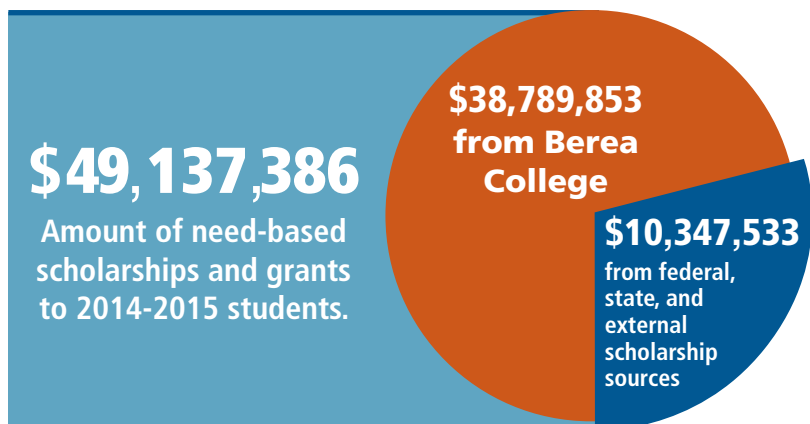
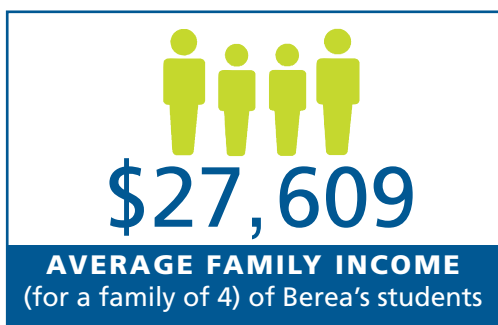
Berea is 1 of 15

private colleges and universities with a coveted Aaa debt rating by Moody's, the highest rating it gives.

Aaa

\$21,819

Amount raised in 2015-2016 by the **Berea Patrons**, a group of **839 current Berea students** who are contributing to the Berea Fund from their own labor earnings, building a culture of philanthropy for Berea's future.



1 in 3

The number of Berea students who
GRADUATED WITH \$0 DEBT IN 2015.

AVERAGE DEBT
AT GRADUATION

NATIONAL

\$35,000

TOTAL DEBT

UP \$2,000

FROM 2014

AVERAGE DEBT
AT GRADUATION

BEREA

\$7,133

TOTAL DEBT

UP \$646

FROM 2014

COLLEGE OUTCOMES SURVEY FOR BERIA GRADUATING SENIORS

I'm proud of my accomplishments at this college: **4.4**

Quality of program of study: **4.2**

This college in general: **4.2**

In choosing a college again, I would choose this one: **4.1**

Items were asked of graduating seniors, 2010-2015;
responses are on a 5-point scale.



78% of first-year students in 2015 were from Berea's Admissions Territory, consisting of Kentucky and much of Appalachia.

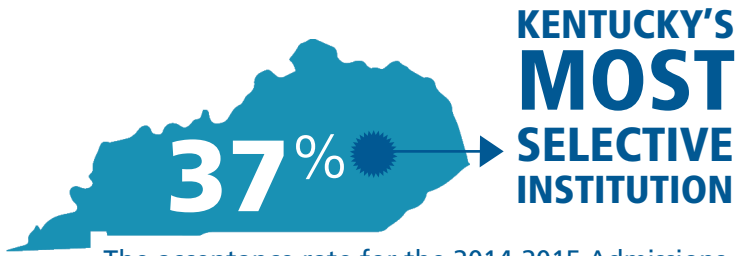
51% of Berea students in 2015 were first-generation college students.

90 first-year Berea students in Fall 2015 were African American (21%).

49 first-year Berea students in Fall 2015 were Latino/Hispanic (11%).

35% of all Berea students in Fall 2015 were from a racial or ethnic category other than "white, non-Hispanic."

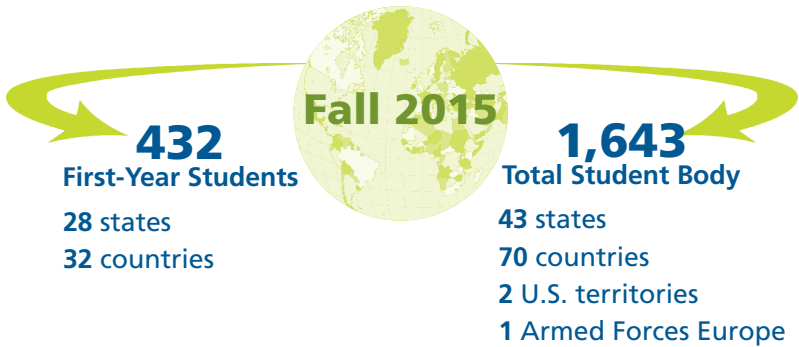
85% of Berea students live on campus.



The acceptance rate for the 2014-2015 Admissions recruiting cycle. Berea College is the most selective institution in the Commonwealth of Kentucky.

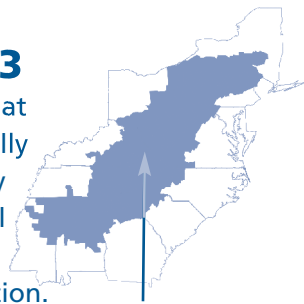
72 The percentage of students offered admission who enrolled in Berea during the 2014-2015 enrollment cycle.

ONE OF THE HIGHEST "YIELDS" IN THE NATION.



In Fall 2015, 372 of 1,593

(23.4 percent) degree-seeking students at Berea College were from an economically at-risk or distressed Appalachian county as defined by the Appalachian Regional Commission (ARC). These represent some of the poorest counties in the nation. 44 percent of all Berea students in 2015 were from an Appalachian county.



Appalachian counties specified by the Appalachian Regional Commission

105

students engaged in Academic Coaching sessions in 2015-2016 designed to build skills and promote success.

33

**MAJORS
OFFERED**

In the last five years, there have been steady increases in Computer and Information Science, Asian Studies, Chemistry, Economics, and Sociology as majors. Students may also propose an independent major.

1 NEW MAJOR

Peace and Social Justice Studies will be added as a major beginning in 2016. Six minors have been added in the last five years.

1/3

of courses taken by students are electives outside of their majors in order to enhance their liberal arts education.

TOP 5

In the last five years, the most popular majors are Business Administration, Biology, Child and Family Studies, Psychology, and Technology and Applied Design.

557

students from **32** classes participated in weekend and in-class workshops sponsored by Writing Resources in 2015-2016. In addition, there were **890** consultations in 2015-2016, up **117** from 2014-2015.

Berea College has 1,643 students of high academic promise and high economic need who are worth much, much more than the tuition they can afford. Here are some of their achievements:

241 Number of students enrolled in service-learning courses.

Represents **13** academic programs and **15** community partner organizations.

2014-2015



87,020 HOURS IN 2014-2015




contributed by students to the community through

SERVICE-LEARNING COURSES,
COMMUNITY SERVICE WORK, AND LABOR POSITIONS
AND INTERNSHIPS WITH NON-PROFIT ORGANIZATIONS



**BENJAMIN A. GILMAN
INTERNATIONAL SCHOLARSHIP WINNERS
2015-2016**

The awards support study and internships abroad for students who might not otherwise participate due to financial constraints.

 **40%** OF THE CLASS OF 2015
43% OF THE CLASS OF 2016
**HAD A COLLEGE-SPONSORED
EXPERIENCE ABROAD**

47
ALL-TIME RECORD

15 percent of students in
2014-2015 studied abroad
in **34** countries as part of
10 programs/sponsors.

Number of students who
spent a semester or a full
year abroad in 2014-2015.

**BEREA IS 1 OF ONLY 40
THOMAS J. WATSON FELLOWSHIP SCHOOLS**

One Fellowship awarded in 2015-2016
and one in 2016-2017

The fellowships challenge students to create their own paths, and provide the support to follow them with a one-year grant for purposeful, independent study outside the U.S.



43 STUDENTS
and
19 FACULTY

participated in undergraduate research projects in 2014-2015.

NATIONAL COUNCIL
LICENSURE EXAMINATION-
REGISTERED NURSE

100%
FIRST-TIME PASS RATE

2015
AND 2016
NURSING GRADUATES

2

**NATIONAL
CHAMPIONSHIPS**

Men's and Women's
Cross Country 2016

**106 ACADEMIC
LETTER WINNERS**

2015-2016

351

STUDENTS

44 STUDENT-ATHLETES

**DEAN'S LIST
SPRING 2016**

FALL 2014 TO FALL 2015

85.9% FIRST-TO-
SECOND-YEAR
RETENTION RATE

EMERGING SCHOLARS PROGRAM

ESP is a support system that assists first-year students in achieving academic, financial, career-planning, social, and personal goals. **Berea's overall first-to-second-year retention rate is 86.3%.**



Speech and Debate Team
105 team and individual awards

WBER
COLLEGE RADIO

22 HOURS

of student and faculty radio programming per week

INAUGURAL YEAR

1st
BEREA
STUDENT
to receive

**CONGRESS/BUNDESTAG
YOUNG PROFESSIONAL GRANT**
A year of work and study in Germany

Advanced Creative Writing Class } **32**
Choreography Class } STUDENTS
Graphic Design Class }

Created "Where We're from" performances as part of a state-wide project led by George Ella Lyon, Kentucky's poet laureate

18 students selected to present undergraduate theses

THEODORE CLEVINGER UNDERGRADUATE HONORS CONFERENCE OF THE SOUTHERN COMMUNICATION ASSOCIATION

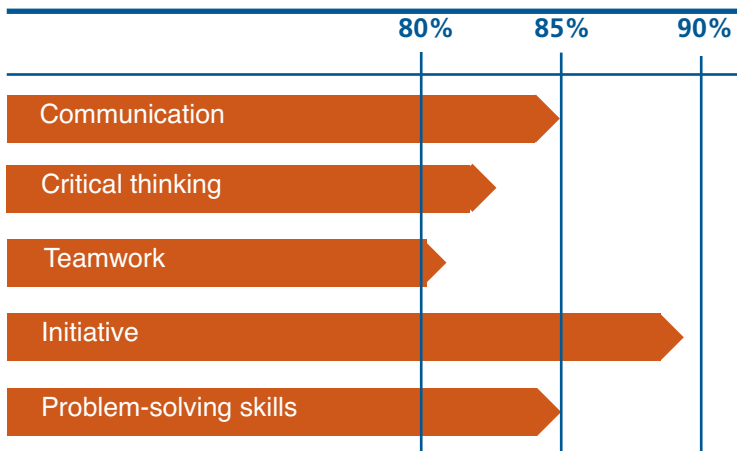
4 TOP PAPERS out of 200 presenters

Berea not only admits students, it hires each of them. Berea students all work a minimum of 10 hours a week in one of 112 labor departments that serve the institution. Students earn money, gain valuable work experience and learning, and contribute to the stewardship of College operations.

100% of Berea College students graduate with an academic and a labor transcript. And when combined with a resume, these transcripts provide the validation of a high-quality liberal arts education and the attainment of work/soft skills.

90%

of students in 2014-2015 credited skills they learned in their labor position as supporting their academic development. Students from Fall 2011 to Spring 2015 credited their labor positions for helping them develop:



Amount of warp and weft thread woven into 511 baby blankets by Berea students in 2015-2016.

28,366,632 inches
427 miles

18,706

Total hours students were contracted to work per week.

2014-2015



25,000
INVOICES

processed by students working in the Office of Financial Affairs in 2015-2016.



Number of People Who Interacted with **BEREA STUDENT CRAFTS**, 2015-2016

OUTREACH EVENTS	11,980
VISITOR CENTER AND SHOPPE	25,000

In order to serve its students well, especially as they build their “bridge out” from Berea, the College supports robust internship and career development opportunities to complement students’ academic learning.

- \$61,000:** Allowed 244 students to buy professional clothing for interviews and jobs in 2015-2016.
- \$41,646:** Allowed 131 students to take graduate school examination preparation in 2015-2016.
- \$24,879:** Allowed 61 students to fund graduate school visits and application fees in 2015-2016.
- \$32,729:** Allowed 73 students to fund professional or academic pursuits in 2015-2016 (professional exams and certifications, job interviews, and job relocation).

<h1 style="margin: 0;">576</h1> <h2 style="margin: 0;">Individual Career Development Appointments with Students</h2>		
	Events	Students Attending
Workshops & Presentations	43	561
Special Events	14	551
Classes in Career Development:		
GST 186– Creating Your Career Action Plan	1	13
GST 386– Enhancing Your Career Readiness	1	55

Summer 2016 Internships

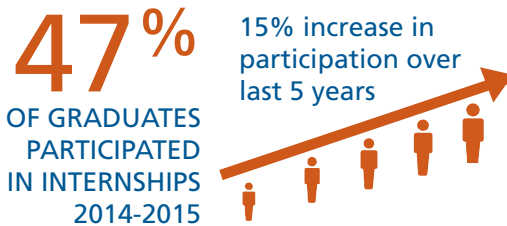
230 Students

29 Majors

33 States

5 Countries

1 Territory



230 INTERNS SUMMER 2016

82% received funding from Berea to help cover expenses

56% were with non-profits or community-service organizations

12% were for Berea College entities

43% were in the state of Kentucky

24,900+

attended 39 **Convocations**. 18,150 of those were Berea College students.

300+

faculty, staff, students, and community members attended the 2015 **Kula Kusoma Luncheon Series** where African and African-American alumni help motivate and inspire current students.

22

The average number of students who voluntarily spend lunchtime discussing interfaith challenges and opportunities as part of the Campus Christian Center's program **Spiritual Seekers**.

90+

The average number of people attending the Francis and Louise Hutchins Center for International Education's weekly program, **Think Globally—It's Friday (TGIF)**, which features students who are from another country or have studied abroad.

45

first-year students participated in the **SUCCESS Peer Mentoring Program** sponsored by the Black Cultural Center.

1st

college to host a **Bonner Scholars Program** as the pilot program of the Bonner Foundation in 1990. Berea College is 1 of 61 colleges and universities in the Bonner Foundation Network, hosting multi-year, service-focused student development programs.

195

events and/or meetings involving the public, community groups, and staff, faculty, and students of the College were hosted by the **Loyal Jones Appalachian Center** in 2015-2016.

331

people from Berea College and across the U.S. participated in the **Dialogue on Race and Education in the 21st Century**, April 6-8, 2016, sponsored by the Carter G. Woodson Center for Interracial Education.

116
MILLION
FITBIT
STEPS
WALKED

during the 2015-2016 academic year
by **67** students and **127** employees
registered with the Wellness program.

STUDENT HEALTH 101 Online Health Magazine

covering topics such as sleep,
stress, nutrition, fitness, alcohol,
sexual health, allergies, and more.

81% of students learned
something they could apply to
their daily lives.

55% of students intend to
get involved, take advantage of
resources, ask for help, or help
a friend.

1,212
POUNDS LOST

BY EMPLOYEES AND STUDENTS
PARTICIPATING IN WEIGHT WATCHERS

SEPTEMBER 2014–
JUNE 2016

35,318

students throughout Kentucky served by **Partners for Education**.

2,917

journal articles and books loaned or sent by **Hutchins Library** to other libraries, 2014-2015.

571

Special Collections & Archives researchers, 2014-2015.

\$473,600

in grants to 31 non-profits in healthcare and education, given by the **Berea College Appalachian Fund** in 2016. A total of \$18,500,000 given to the families and communities of central Appalachia since its beginning.

2.3 million pounds

of fruit and vegetables raised by 3,600 families working with **Grow Appalachia** in its first six years, 2010-2015.

132

children enrolled in Berea's **Boyd and Gaynell Fowler Child Development Laboratory** in 2015.

216

entrepreneurs and small businesses were interviewed by 20 **Entrepreneurship for the Public Good** students during Summer 2016.



\$1,335,153

spent in the past 9 years by Dining Services to purchase local food within a 150-mile radius

2014



2015

RECYCLED MATERIALS

Material	Quantity	Equivalent
Construction Waste	1,888,379 lbs.	24 Semi Trucks
Composting	102,761 lbs.	Food for 51 Adults for 1 Year
Cardboard	98,047 lbs.	8 Elephants
Paper	95,856 lbs.	325 Refrigerators
Scrap Metal	82,691 lbs.	20 Cars
Wood Scraps	22,500 lbs.	4500 Textbooks
Plastic/Cans	4,500 lbs.	39 Barrels of Oil
Glass	8,762 lbs.	1 RV
eWaste	4,340 lbs.	347 New iMacs



RIDE SHARE SAVINGS

BY 308 CUMULATIVE USERS

413 GALLONS OF GAS, APRIL 2015–APRIL 2016

8,027 LBS. OF CO₂ EMISSIONS SAVED

LEED CERTIFIED BUILDINGS

LEADERSHIP IN ENERGY AND ENVIRONMENTAL DESIGN

1 LEED PLATINUM
DEEP GREEN RESIDENCE HALL

4 LEED GOLD
BOONE TAVERN
ANNA SMITH RESIDENCE HALL
KNAPP HALL
DANA RESIDENCE HALL

1 LEED SILVER
LINCOLN HALL

\$773,441 Cost Savings and/or Cost Avoidance
from Continuous Improvement Projects, 2015-2016

46

CUSTOM RECYCLING STATIONS
for Residence Halls built by the
College's Woodcraft program

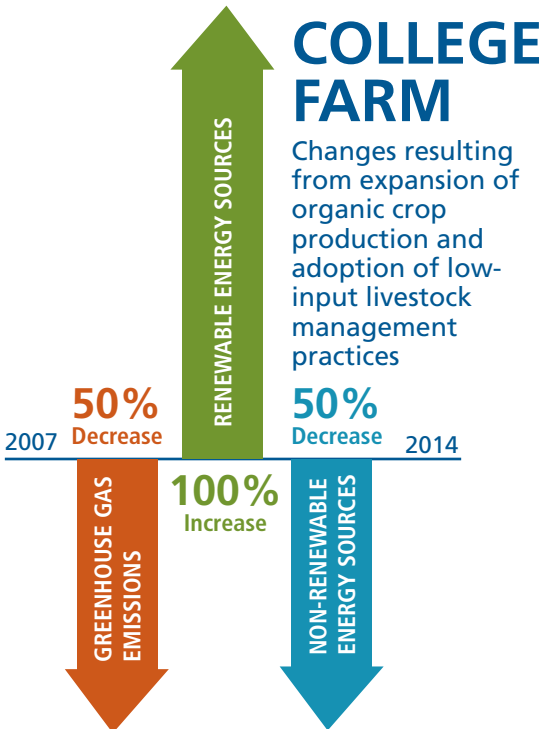
COMPOST

from wood chips and food waste used to raise vegetables, fruits, herbs, and flowers on the Berea College Farm

OVER
30
TONS
ANNUALLY



BEREA COLLEGE FARM
OLDEST CONTINUOUSLY OPERATING
STUDENT EDUCATIONAL FARM IN THE U.S.



75%

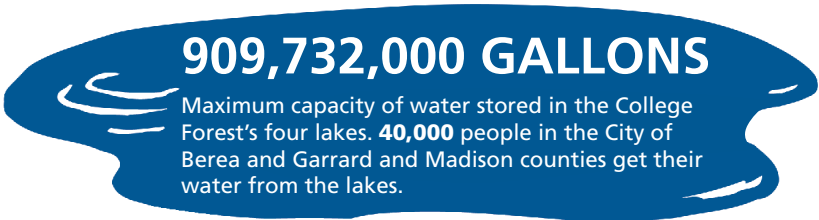
of the **COLLEGE FARM STORE'S** sales are derived from items partially or solely generated on the Berea College Farm.



8,912 ACRES

BEREA COLLEGE FOREST

One of the largest private forest holdings in Kentucky dedicated to recreation, conservation, and educational uses.



909,732,000 GALLONS
Maximum capacity of water stored in the College Forest's four lakes. **40,000** people in the City of Berea and Garrard and Madison counties get their water from the lakes.



2 AND 2
HORSES MULES

UTILIZED IN THE NEW SUSTAINABLE LOGGING PROGRAM IN THE COLLEGE FOREST.



BEREA COLLEGE FOLLOWERS



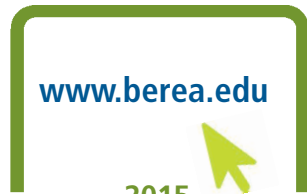
20,000
Facebook



3,000
Instagram



From **45** countries
around the world



2015

WEBSITE STATISTICS

1,188: average number of visitors per day.
500,000 unique visitors.
1,616: average number of page views per day.
8 pages viewed per visit.
1 minute, 17 seconds: average length of visit.
31.6% bounce rate (visitors who view one page and leave). 41-55% is average bounce rate.



HISTORIC
BOONE TAVERN
HOTEL AND RESTAURANT

109 YEARS OF CONTINUOUS OPERATION

22,300 OVERNIGHT GUESTS IN 2015

AROUND CAMPUS



56 Bells in the John E. Courter Carillon and
10 Bells in the Chimes



45 Pianos in Presser Hall



4 Organs, including a Holtkamp pipe organ

OVER 300 STUDENT PARTICIPANTS

Campus Outdoor Recreation Program

HIKING, HORSEBACK RIDING,
WHITE WATER RAFTING,
and SKIING
in
Colorado, North Carolina,
and Kentucky

OVER
100

ACTIVE STUDENT
CLUBS AND
ORGANIZATIONS

12

ENSEMBLES
in the
Music Program



Berea has 551 dedicated staff and 169 faculty working hard for the success of students at Berea and beyond. Here are some of their accomplishments:

45

faculty and staff participated in the 2015 Berea College **Civil Rights Seminar and Tour**, which highlighted “The Political, Legal, and Physical Journey from Chattel Property to American Citizen.” The 2015 tour explored civil rights locations in eight cities (Memphis and Clinton in Tennessee; Muscle Shoals, Birmingham, Montgomery, Selma, Haynesville, and Scottsboro, in Alabama).

725 HOURS

Over 30 faculty members participated in ongoing Center for Transformative Learning-sponsored teaching-related professional development during the academic year.

72

faculty members requested Professional Growth Funds in 2015-2016 from the Office of the Academic Vice President and Dean of the Faculty.

\$276,925

Amount of money the College spent in 2015-2016 on faculty development, including sabbaticals.

\$188,744

Amount of money the College spent in 2015-2016 to support staff development.

100%

of students advised by a full-time faculty member

133 Full-time Instructional Faculty in 2015-2016

15% Members of minority groups

47% Women

92% Have a terminal degree

55% Tenured

14% Berea alumni

50 Average age

474 Staff in 2015-2016

11% Members of minority groups

62% Women

32% Berea alumni

52,544 HOURS

of high-quality teaching experienced by 1,643 students in 2015-2016

10:1

Student-to-Faculty Ratio in Fall 2015

\$58,809

The amount of money contributed by Berea faculty and staff to Berea College in 2015-2016.

18,304
ALUMNI
ON RECORD

65% reside in Berea's Admissions Territory (all of Kentucky and much of Appalachia)

6,768 live in Kentucky

80 Countries are represented

20,511 GRADUATES
FROM BERA COLLEGE SINCE ITS FOUNDING

TOTAL NUMBER OF GRADUATES BY SELECTED MAJORS

MAJOR	NUMBER
Agriculture/Agriculture & Natural Resources	955
Art	600
Biology	1039
Business Administration	2217
Chemistry	543
Computer & Information Science	74
Education/Education Studies	1264
English	1195
Geology	65
Industrial Tech Management/Technology & Applied Design . . .	826
Mathematics	705
Nursing	1008
Physics	241
Psychology	697
Women's Studies/Women's & Gender Studies	56

Accolades



—*Washington Monthly Magazine*, September/October 2016

- **1 of 11:** The Department of Education on April 22, 2016, announced 11 higher education institutions as 2016 Green Ribbon Schools (ED-GRS). The award recognizes efforts to reduce environmental impact and costs, improve health and wellness, and implement effective environmental education. Berea was one of eleven schools so distinguished.
- **#18:** The Top 50 Best Schools for African Americans
—*Essence Magazine*, 2016
- 2015 Tree Campus USA® Recognition
—Arbor Day Foundation
- Berea featured in “Colleges That Pay You Back: 2016 Edition.”
—Princeton Review
- A 2016 **“Best College Value”**
—*Kiplinger’s Personal Finance*
- One of “Best 10 Colleges for the Money”
—*USA Today*
- One of Best Colleges and 50 Most Affordable Private Colleges
—*MONEY*
- **Top of List** for Colleges with Least Student Debt, 2016
—*U.S. News & World Report*
- Berea ranked **14 out of 1,182** four-year U.S. colleges in Educate to Career’s College Rankings, which analyzes the labor market outcomes of graduates.
- **#2:** Berea College Farm ranked in the Top 30 Sustainable College-Run Farms, 2016

THE GREAT COMMITMENTS OF BEREA COLLEGE

Berea College, founded by ardent abolitionists and radical reformers, continues today as an educational institution still firmly rooted in its historic purpose “to promote the cause of Christ.” Adherence to the College’s scriptural foundation, “God has made of one blood all peoples of the earth,” shapes the College’s culture and programs so that students and staff alike can work toward both personal goals and a vision of a world shaped by Christian values, such as the power of love over hate, human dignity and equality, and peace with justice. This environment frees persons to be active learners, workers, and servers as members of the academic community and as citizens of the world. The Berea experience nurtures intellectual, physical, aesthetic, emotional, and spiritual potentials and with those the power to make meaningful commitments and translate them into action.